

Samba

by Eddyline Kayaks

You could say that the Samba is a selfish design, as it really came out of my desire to create a new boat for myself. I am 5'8", 160 lbs. and have been paddling for 45 years. In a nutshell, these are the qualities I strove for in this design: small enough to be light and easily managed, adequate stability for photography or just relaxing (even for a novice), quick to accelerate, easy to keep at speed, a snug and secure seat with a keyhole cockpit with good control surfaces, very easy to lean and carve turns, great secondary stability and good maneuverability. In a word—playful! I added a skeg to increase the dynamic range between tracking and turning. The Samba facilitates everything that I love about kayaking, but the next greatest pleasure I had was hearing my wife, Lisa, exclaim one day while paddling in some waves and swell "I love this boat!" The Samba must be danced with to be fully appreciated!

—Tom Derrer, Designer, Eddyline Kayaks

REVIEWERS

JK: 5' 6", 150-pound male. Day trip, calm conditions. No Cargo.

GL: 5' 11", 165-pound male. Day paddles, calm to 10 knot wind, 2-foot chop. No cargo.

TE: 6' 1", 200-pound male. Day paddles, calm and in winds to 22 knots, waves to 4 feet. No Cargo.

Length overall	13' 9 3/8"
Beam	22 3/4"
Volume	10.0 cu. ft.
Cockpit size	16 1/2" x 31 1/2"
Cockpit coaming height:	
Forward	12 1/4"
Aft	8 3/8"
Height of seat	1 3/4"
Weight	42 3/4 lbs.

THE REVIEW

First Glance

The Samba is "a trim, compact kayak with an appealing profile and a graceful sheer line. The hull has only a bit of softness amidships either side of the keel line; the crease at the keel was quite stiff so the hull didn't oil-can" (TE). The thermoformed hull and deck are joined with an overlapping seam. "The Samba looks like—and is—a full-featured kayak, with a nice layout and without clutter. It balances nicely on the shoulder and is light in weight. Carry toggles are an easy grip and retract onto the deck when not in use" (GL).

"The deck fittings are simple, straightforward and clean. The padeyes are semi-recessed and the bungees are basic but functional. A spare paddle can be stowed on the back deck. The forward-most bungee on the back deck is very close to the coaming. I think it should be moved back a little. There are double bungees behind the cockpit to hold a paddle-float outrigger" (JK).

Fit

JK found "the cockpit snug and comfortable. It is nice to have a smaller cockpit for smaller paddlers. I can get in seat before feet, but only one knee at a time due to the narrow keyhole." "Foot room is a bit limited. I had no problems with my size-10 booties, but with my size-12 mukluks my toes were curled over the foot pegs" (GL). TE noted he was "about as big a paddler as can fit in the Samba. With the seat slid all the way back and the footrests far forward I was just fine."

The molded plastic seat can be adjusted fore and aft for fit and trim. Its forward edge is about four inches high and TE "initially felt a bit of pressure along the front of the seat. It didn't pose a problem while paddling and the rest of the seat fit well. The lateral fit of the seat was perfect." The backrest pivots on a post connected to the seat and its height is adjustable. JK "thought it rather high in its lowest position" and expressed a preference for back bands (an Eddyline option). "The backrest's substantial, hinged attachment to the seat gives it a three-dimensional movement, so comfortable I hardly noticed it" (GL).

"The thigh braces are comfortable and effective. They help the kayak feel cozy and secure. After paddling for a while they felt a little too low" (JK). TE also noted "the thigh brace flanges would be more comfortable if set higher."

The Sea-Dog "foot pedals are solid and well-located, with an adjustment



lever that's reachable while under way" (GL). The skeg is deployed by a slide to the right of the cockpit. It is "smooth and easy to operate" (TE).

Stability and Maneuverability

The initial stability was rated as: "moderate, a little tippy but not too bad" (JK), "moderate" (GL) and "good—it's a comfortable platform for hands-off-the-paddle activities" (TE). Secondary stability was rated, respectively, as "moderate to light," "moderately high. Feels lively with a decent secondary to lean up against" and "moderate: it softens up when the coaming hits the water."

"The Samba yaws very slightly with each stroke but holds a course well" (JK). TE noted "tracking was excellent. It was effortless to keep on course." "With a little edging the Samba carves nice turns. Definitely sporty!" (JK) "Nice balance between turning and tracking" (GL).

Speed

The Samba is "surprisingly quick. It has an easy cruising pace of 4 knots! Exercise pace brought it to 5 knots, but it topped out at 5½ knots when sprinting. Now, small paddlers can paddle a kayak that fits and keeps up with longer boats" (JK). GL noted "very good speed with minimal effort. Plenty fast for group paddles at typical 3- to 3½-knot pace." TE measured "4 knots at a cruising pace, 5 knots at an exercise pace and a bit over 5½ knots at a sprint. It seemed very easy to drive at a relaxed pace."

For TE the Samba had "a very slight tendency to weathercock on fairly flat water. It required only occasional sweep strokes to correct. With the skeg deployed it was very well-behaved and kept a steady course. Paddling upwind I took only a couple of splashes in the face from the hatch recess. Most of the big waves just tumbled aft and washed over the spray deck. With steep following seas the Samba took off like a shot. The bow rose up on a plane with sheets of water shooting out from the chines. Steering with a stern rudder was effective at keeping the bow pointed down

BEST FEATURES

- Balance of tracking and steering
- Easy cruising speed

TO IMPROVE

- Thigh brace position

wave. The Samba could be a bit squirrely on takeoff, and while having the skeg deployed kept it steadier, it also made steering on the face more of an effort. I lost a few rides on good-sized rollers because I couldn't match speed with them. The fun was in the steep stuff. The low profile made it easy to turn around and paddle back upwind for the next ride. The snug fit offered great boat control. I only had to slap a couple of braces to make up for lapses in stability. In all it was great fun" (TE).

Rescue and Rolling

"Getting out of the Samba after capsizing was easy as long as I led one leg ahead of the other. The low aft deck made lunging aboard a breeze, though with my weight on the back deck the stern would go under if I strayed too far aft. Straddling the boat and dropping in seat first was fine with a little layback" (TE). For JK the Samba was "a pleasure to roll. It rolls up almost effortlessly. The back of the coaming is a bit high, but the sliding seat can help; moving it forward allows for easier laying back." "I slid around a bit due to the ample hip room, but it's easy to roll, with good thigh and foot contact" (GL).

Cruising

There is "enough stowage for an overnight or several-day trip, but the round hatch openings mean packing in small dry bags, and most things long and thin won't make it in. A tightly wrapped two-person tent, complete with poles, fit in both the bow



The knob at the front of the seat allows you to adjust the fore-and-aft position of the seat.

and the stern. A 30° F sleeping bag did too, but a 20° F sleeping bag proved too fat for the openings. It would have been nice if Eddyline supplied an oval hatch for the stern, which could then accommodate many more items and ease packing. There is some space behind the seat for items like waterbags" (GL).

The tethered hatches allowed some water in, a few tablespoons in each compartment were reported by all. The bulkheads are molded plastic glued in place.

The Bottom Line

The Samba is "a great kayak for smaller, experienced paddlers who want speed and maneuverability. It can keep up with groups, and is a pleasure to lift. You don't have to be a hard-core paddler to enjoy the Samba, just comfortable with low stability. A fun little kayak" (JK). "A stable but lively boat for small- to medium-sized paddlers, the Samba is a fun kayak that maneuvers well and can provide safe passage in wind, keep up in group paddles, and provide easy car topping" (GL). "The Samba surprised me for a small boat that I could get into and enjoy. While I was aboard I didn't give much thought to its size. In many ways it felt like a full-sized kayak. In wind and waves it was indeed playful" (TE).

MANUFACTURER'S RESPONSE

I am delighted that the test team enjoyed the Samba as I do. It would have been nice to have had a female on the review team, as I think this will be a very popular boat with women as well. Nevertheless, I have the highest regard for the objectivity and responsiveness of the *Sea Kayaker* team and am quite appreciative of having worked with them over the years.

We have made the back band a standard feature of the Samba with the backrest being available as an option. Both systems use all the same connections and switching between the two is virtually effortless. The sliding seat and adjustable backrest system have been in our line for several years now and have been well liked. We are reviewing the

height of the thigh braces as that was mentioned by the team.

Personally, I like the degree of contact and control they provide. At my size, I find I can relax by bringing my legs together in the cockpit. I do think the Samba is also a viable choice for novice paddlers looking to develop some paddling skill. And of course anyone making a boat selection should "try before you buy." There is video of the Samba in use on our website now and we will be adding more as it becomes available.

Eddyline celebrates our 40th year of manufacturing kayaks with the Samba. We hope you enjoy it as much as we do. One more thank you to *Sea Kayaker* and I'm off to go paddling!

—Tom Derrer, designer, Eddyline Kayaks

KAYAK REVIEWS

SAMBA MANUFACTURING DATA

Designed: 2010

Standard construction: Thermoformed Carbonlite 2000, a proprietary high performance co-extruded plastic laminate with a hard-abrasion and UV-resistant exterior.

Standard Features: drop-down skeg, perimeter lines, bulkheads and hatches, retractable carry handles, deck bungies and adjustable seat and backrest.

Option: back band

Weight: 43 pounds

Price: \$ 2,199 USD

Availability: See website for a list of dealers.

Manufacturer: Eddyline Kayaks

360-757-2300

email via website

www.eddyline.com

SPEED VS. RESISTANCE

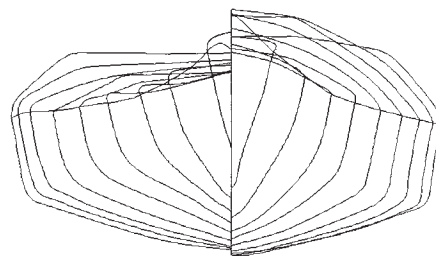
Resistance in pounds.

Speed	Winters/KAPER
2 knots	0.89
3 knots	1.86
4 knots	3.80
4.5 knots	5.90
5 knots	9.16
6 knots	14.25

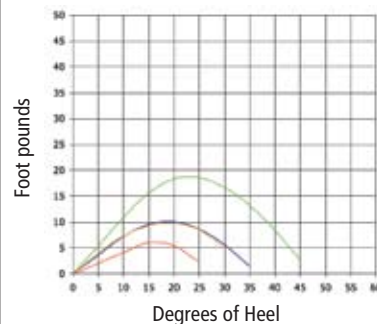
HYDROSTATICS

Waterline length	12' 11.6"
Waterline beam	21.8"
Draft	5.6"
Prismatic coefficient	0.54
Wetted surface in sq. ft.	19.83
Center of buoyancy	51%

(Hydrostatics calculated with a 250-pound load.)



Righting/Heeling Moments (Fixed-weight)



Stability Curves*

- 150 lb. paddler, no cargo
- 200 lb. paddler, no cargo
- 150 lb. paddler, 100 lb. cargo
- 200 lb. paddler, 100 lb. cargo

*Formula revised December 2009. (Not comparable with stability graphs generated prior to December 2009.)

TECH TALK: Readers interested in the full set of hydrostatics can find them posted on our website at www.seakayakermag.com along

with additional data. An explanation of the terms and procedures used in the kayak test program is also available on the site.


The FourPlay®

Multiple-use Paddle Float

You know you want it

The FourPlay can be used as a kayak Beaching Pad to protect your boat from barnacles and rocks, a Vehicle Protection Pad, Sleep Mat, Paddle Float, Camp Chair and Kneeling Pad. This product has so many uses we could have called it the Six or Seven Play but that was not as fun.

www.northwater.com



NORTH WATER
PADDLE SPORTS
EQUIPMENT